

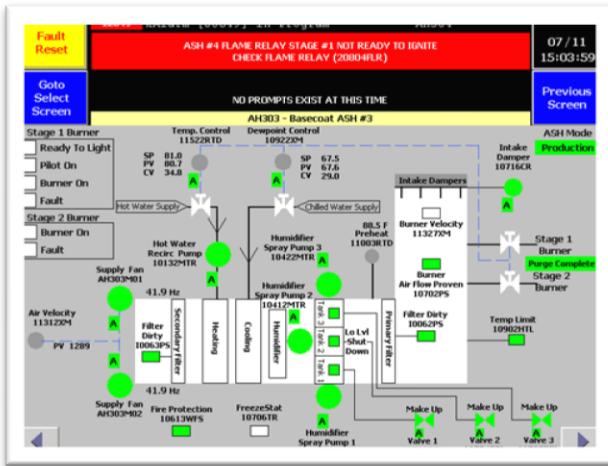
Leading Automotive Manufacture Upgrades Existing Paint Shop Controls System

Main Objective:

The purpose of this project was to provide the electrical process controls upgrade for an existing automotive paint facility.

Customer Results:

As a result of the positive outcome of this project, OTI was contracted at the conclusion of the project to provide five (5) months of production support for the entire paint shop, including systems not present in the original scope of work (i.e. Phosphate, ELPO, Ovens, and RTO).



All systems controls performed as designed. The customer and end user were satisfied and OTI was paid in full. Warranty in first year after installation was minimal with no trips to site for warranty work.

Overview:

- ❖ New global controls architecture was used wherever possible. A combination of standard panels and custom designed panels were engineered while utilizing the new controls architecture. New MCPs and VFDs were purchased. Existing control panels were re-used. All I/O was removed and replaced by Allen Bradley Flex I/O with DeviceNet communication. New ControlLogix PLC programs and Siemens WinCC HMI programs were created for all systems.
- ❖ The Carrier Cleaner system upgrade included a control-reliable design and a new DeviceNet interface with two relocated and reused robots.
- ❖ Provided the following services:
 - Electrical hardwire design engineering
 - Modifications to existing paint shop electrical drawings
 - Sequence of operations
 - HMI software design engineering
 - PLC software design engineering
 - Network software design engineering (DeviceNet)
 - Capital material
 - And more...

Every owner, manager, and key decision maker is an engineer. They have all been through the ranks and learned this business before they were given the responsibility to manage it. Diversity is also a key to our success. From a technical standpoint specific areas of expertise include: High Temperature applications, Automotive Paint Finishing, Pharmaceutical Automation, Web Handling Applications, Custom Software Solutions, and Safety. As a Systems Integrator, we are a 50/50 split between Continuous Process and Discrete Automation expertise.

Outbound Technologies Inc.

30026 Research Drive, New Hudson, MI 48165, USA

Tel: (248)-735-5000 Fax: (248)-735-5001

www.outboundtech.com

Email: MI@outboundtech.com

